

SERVICE INSTRUCTIONS

www.keatingofchicago.com

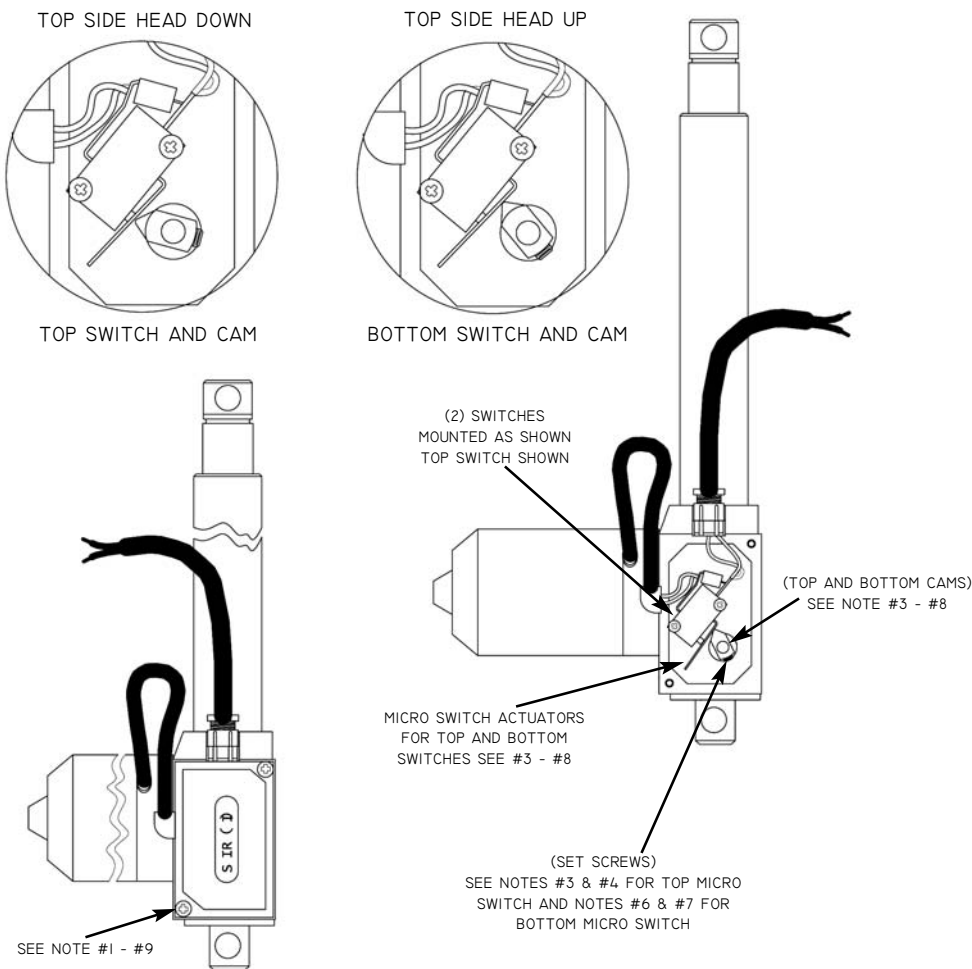
KEATING
OF CHICAGO, INC. ®

Part # 037797

1-800-KEATING

INSTRUCTIONS FOR MICRO SWITCH ADJUSTMENT FOR AUTO TOP SIDE HEAD ACTUATOR

Tool needed: 2.5 mm Allen Wrench



****NOTE THE TOP AND BOTTOM SWITCH ARE ASSEMBLED IN LINE.****

1. Remove the limits switch black plastic cover on the actuator.

2. Turn on the power on unit and push the start button on the timer. The actuator will extend the stroke and lowers head. The motor must stop and the stroke should stop extending before it reaches its mechanical stop. This movement is controlled by the top micro switch.

3. If the motor fails to stop, manually depress the top micro switch actuator. This will disconnect power to the actuator motor. Loosen the set screw located on the top cam. Rotate the top cam clockwise until the switch is made (you should hear it click).

4. Tighten the set screw on the cam, use blue locktite.

5. Turn on the power on unit and push the start button on the timer until it goes to the preset time. The actuator will retract the stroke and raise the head. The motor must stop and the stroke should stop retracting before it reaches its mechanical stop. This movement is controlled by bottom micro switch.

6. If the motor fails to stop, manually depress the bottom micro switch actuator. This will disconnect power to the actuator motor. Loosen the set screw located on the bottom cam. Rotate the bottom cam counter clockwise, until the switch is made (you should hear it click).

7. Tighten the set screw on the cam, use blue locktite.

8. Test the top side head. Verify the adjustments did not change the length of the stroke, thus preventing correct function of the top side head. The top side cooking head must be able to reach the griddle plate. If it does not function properly complete steps #2 - #7.

9. Reinstall the switches cover.